

# explore **smuggs**



WINTER TWENTY TWENTYTHREE/FOUR | VOLUME THIRTYEIGHT  
THE INSIDER'S GUIDE TO THE MOUNTAIN LIFESTYLE



Isn't it time to vacation your way?



CLUB WYNDHAM® owners can:

- Choose the unit size that's right for your vacation, from one to four bedrooms
- Travel to any of the 230+ vacation ownership resorts without paying an exchange fee
- Participate in weekend events at many of our popular resort destinations
- Be treated like an owner wherever you choose to travel!

Visit us at the Village Center or call extension 1253 today to learn more.



**CLUB WYNDHAM**

Open daily for curious minds of all ages!

**eCHO**  
LEAHY CENTER  
FOR LAKE CHAMPLAIN

1 COLLEGE STREET  
BURLINGTON, VT  
(802) 864-1848  
ECHOVT.ORG



Vermont's science & nature museum on the Burlington waterfront

Winter Comes Alive at ECHO!



SLED DOGS LIVE  
NOV. 25 & DEC. 27



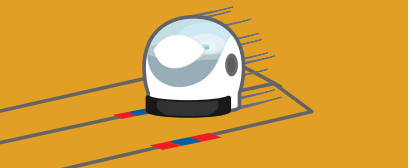
REINDEER LIVE  
DEC. 3 & 30



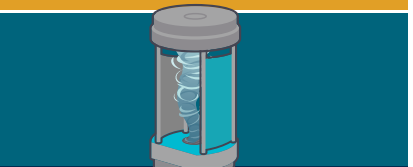
MISSION AEROSPACE EXHIBIT  
OPENS JANUARY 20



DAILY LIVE ANIMALS  
& DEMOS



ENGINEER IT!: DESIGN & BUILD  
ACTIVITIES



AWESOME FORCES  
EXHIBIT



MUSEUM STORE TOYS,  
GAMES, GIFTS!



**MOUNTAIN GROVE  
COFFEE**

*Exceptional Roasted Blends*

Smugglers' Notch and Mountain Grove Coffee have partnered to provide the finest special blends only available at the Country Store.

**Stop by and get yours today!**

The Country Store is located in Smugglers' Village Center.



VERMONT  
**Maple Mudpie**  
Chocolate Nut Flavors with Maple Flavored

**STAFF FAVORITE:**  
Maple Mudpie Latte  
from the Perk!



Serving smoothies, hot & cold espresso, cappuccino, lattes, chai tea, and mochas. Offering a variety of pastries and fresh baked goods prepared locally and much more!

Open daily, 7:30 am - 6:00 pm



1.802.644.1058  
Ext. 1058 from any house phone.

Located in the Country Store in Smugglers' Village Center.



# Country Store



**THE COUNTRY STORE** has just about everything you may need including a variety of coffees, grocery items, fruits & veggies, Cabot cheese, packaged meats, sandwiches, and salads perfect to take with you while exploring all Smuggs has to offer!

**Open daily 7:30 am - 9:00 pm • 802.644.1196**

**Extension 1196** from any house phone

Located in Smugglers' Village Center.

*Featuring a wide variety of Vermont-made products!*





# contents

Welcome 10

## ARTICLES

**FIRST CHAIR TO LAST LIGHT**  
A ski patrol parent chronicles the bond of the mountain family 15

**HAUNTED HISTORY WALK**  
A storytelling stroll through the woods at night 27

**POWDER CHEFS**  
Whipping up winter one flake at a time 34

**THE TOTAL ECLIPSE**  
Is coming to Vermont 49

**COOKING UP A STORM**  
Troy Bellot's Flavorful Journey from FBI to Culinary Maestro at Smugglers' Notch 57





# SMUGGS PHOTOS.COM

"We really had fun...BEST photo session ever, can not wait to see them!"

— Smuggs Photo Client

Family & Group Photos

Senior Portraits

Weddings

Drone Photography



Reservations required, contact Guest Services at ext. 1293 or call direct: 802.598.0002



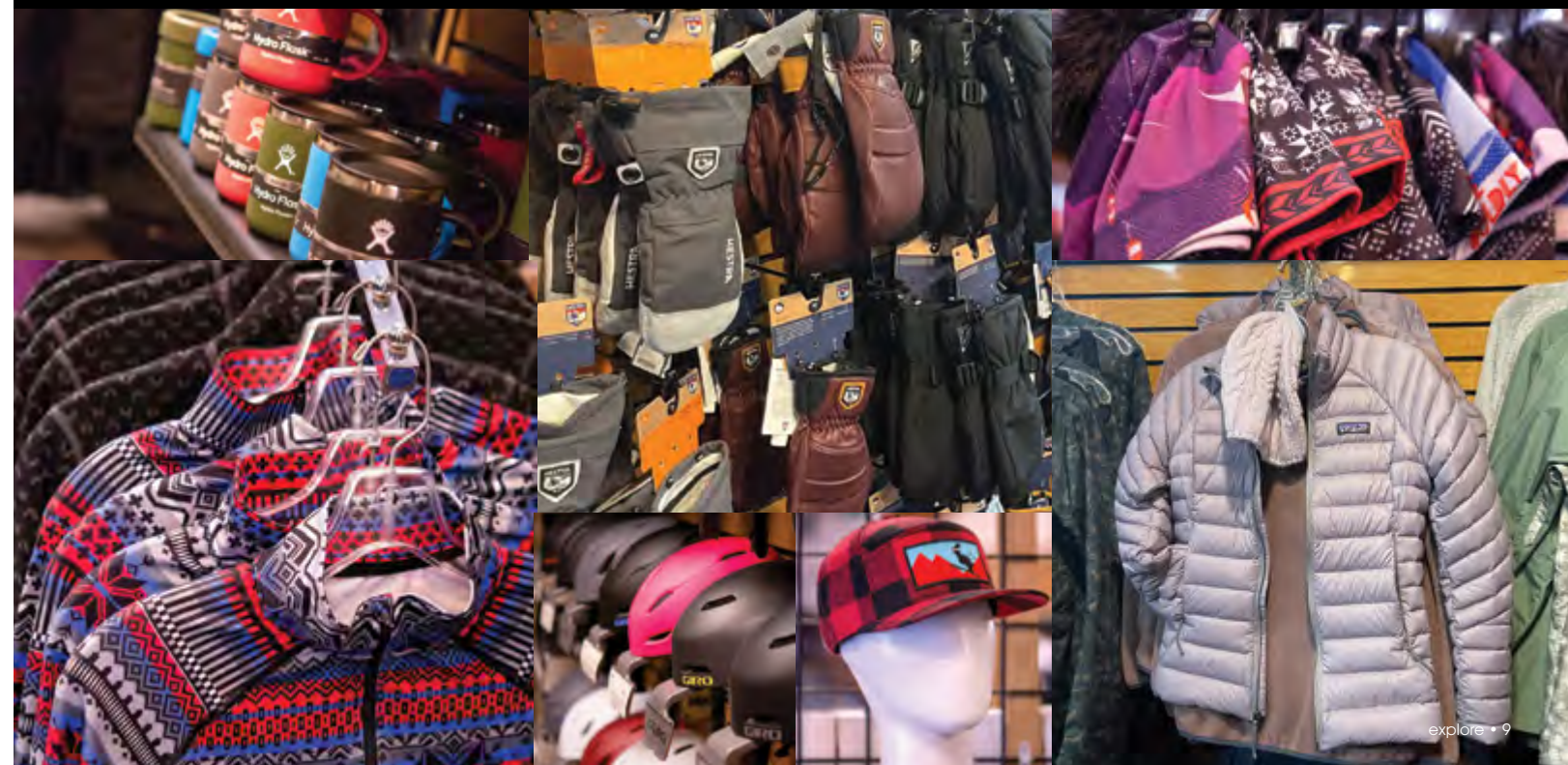
## 3 mountain Outfitters

Footwear, gear and apparel for men, women & children

Located in the Village and at the Base Lodge

Anon • Burton • Cotopaxi • Dansko • Darn Tough • Flylow • Giro • Helly Hansen • Hestra • Hot Chilllys  
Kari Traa • Krimson Clover • Kuhl • Merrell • Obermeyer • Oakley • Outdoor Research • Patagonia  
POC • 686 • Skida • Skhoop • Snow Skins • Smartwool • Smith • Spyder • Turtle Fur

VILLAGE CENTER LOCATION Open daily, Sun. - Wed. 8:00 am - 6:00 pm & Thurs. - Sun. 8:00 am - 8:00 pm. Ext. 1150  
BASE LODGE LOCATION Open daily, 8:30 am - 3:30 pm. Ext. 1183



Celebrating diverse holiday traditions



Dead Head Dads & Americana Moms- it's a FAM JAM



We'll plunder the powder, this ski-faring crew



Apple MUSIC Spotify music Amazon Music

Purchase your Friendly Pirate books & CDs at 3 Mountain Outfitters or the Country Store TODAY!





America's Family Resort<sup>SM</sup>

Explore Smuggs Magazine  
winter 2023/24

Creative Content, Design & Layout:  
Priscilla Emerling

Advertising: Steve Clokey  
802-644-1119 • [sclokey@smuggs.com](mailto:sclokey@smuggs.com)

Contributors:  
Karen Boushie • Kelly Mohr  
Grace Morgan • Rena Perkins

Copy Editor: Stacy Maynard

Printing: The Offset House – Essex, VT

Cover Photo:  
C.H.Diegel Photography ·  
[chdiegelphotography.com](http://chdiegelphotography.com)

Smugglers' Notch Resort  
4323 Route 108 South  
Jeffersonville, VT 05464

802-644-8851 • 1-800-451-8752  
[www.smuggs.com](http://www.smuggs.com)

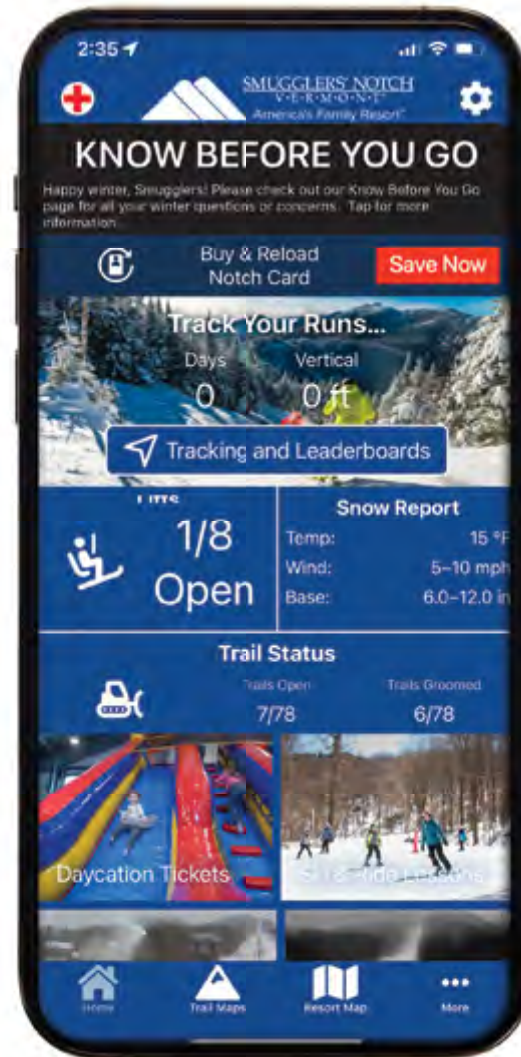
Printed on 10% post-consumer recycled paper. When you are finished reading your copy of Explore Smuggs magazine, please pass it along to a friend or dispose of it in an appropriate recycling container.

©2023 All rights reserved. Any reproduction of articles or other features of this magazine is prohibited without written permission of the publisher. America's Family Resort is a service mark and Smugglers' Notch Resort, Smugglers' Notch, Vermont, Smuggs, FamilyFest, Snow Sport University and Summer Fun University are registered service marks of Smugglers' Notch Resort.

*Weather, webcams, maps, & more!*

**SNOW REPORT, MAPS,  
PHONE NUMBERS, AMENITIES  
& ACTIVITIES ALL AT  
YOUR FINGERTIPS.**

*Download the Smuggs App today!*



Whether you're a first-time visitor or a long-term local, the Smuggs App will help you make the most of your time at Smuggs!

[smuggs.com/app](http://smuggs.com/app)

# welcome

We're delighted that you've chosen to spend your vacation in the winter wonderland of Vermont's Green Mountains. Our ultimate wish is to create an unforgettable experience for you and your family, filled with joyous moments to be treasured forever.

This winter season, we're elevating the fun across the entire Resort, introducing new activities, revamped menus, and much more! Our mountain offerings are expanding with exciting additions like mini snowmobile tours and additional Nordic and snowshoe trails, ensuring that the thrill extends beyond the slopes. The fun doesn't just happen on skis and snowboards. Our dedicated staff has curated a diverse range of options for kids of all ages, ensuring your days and nights are brimming with excitement. Dive into the pool, and dip in the hot tub, and so much more – the possibilities are endless!

Don't forget to extend a warm greeting to Troy, our world-traveling, former FBI recruit, and current Director of Food and Beverage. With his remarkable expertise and unwavering focus on culinary excellence, he guarantees a dining experience that will leave a lasting impression.

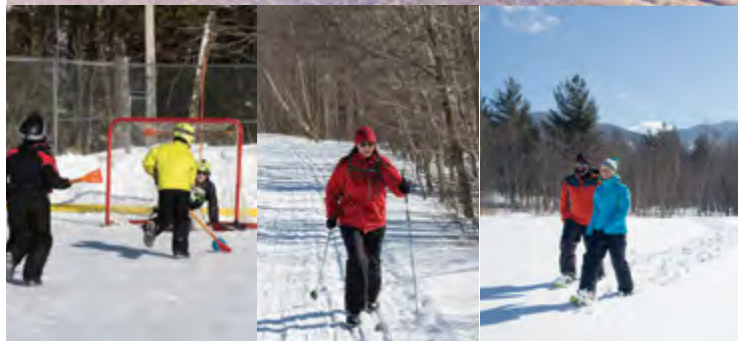
At Smugglers' Notch Resort, the excitement never stops. If there's anything we can do to enhance your vacation experience – whether it's ensuring relaxation, comfort, or more fun – please let any member of our staff know. We're dedicated to making your stay truly exceptional.

Wishing you and your family a delightful and memorable stay!

— *The Smugglers' Staff*

Photo by Kody Houde





LOCATED IN SMUGGLERS' VILLAGE  
BEHIND THE COURTSIDE POOL

- \* Dedicated cross-country & snowshoe trails
- \* FREE trail access with a valid lift pass
- \* Group & private lessons
- \* Outdoor natural ice skating
- \* Nordic, skates & snowshoe rentals
- \* Day & evening snowshoe tours

802.644.1173 • EXT 1173 from any house phone

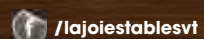


## OFFERING SLEIGH & HORSEBACK RIDES

Conveniently located only 10 minutes from Smugglers' Notch Resort! Go back in time and experience the serenity of a horse drawn sleigh or horseback ride. Your journey will take you through a grove of blue spruce, open fields and into a forest of hardwoods.

Our family and experienced staff are looking forward to making your horseback ride a memorable experience!

**Reservations & Info:** 802.644.5347 • [lajoiestables.com](http://lajoiestables.com)  
Reservations are required • All credit cards accepted • Open 7 days a week



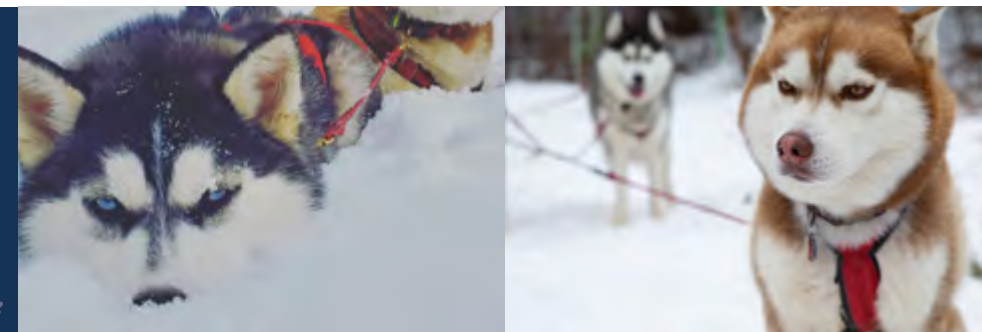
## Meet the Siberian Sled DOGS!

Saturday 3:00 pm at McGovern Lodge

**Experience an Unforgettable Adventure with Milagro and the Siber Sled Dogs!** Dive into an engaging, educational journey where you'll discover the fascinating world of sled dogs. Get up close and personal with these incredible animals, learn about their lives, and capture memorable moments with a photo session.

\$20 per person for this unique experience. Secure your spot today — go to [smuggs.com/register](http://smuggs.com/register)

Program begins December 23rd.



## JOIN US AT THE TOP OF OUR WORLD ON THE CAT TRAX EXPRESS

Our 12-passenger cabin snowcat ride gives your family thrills like you have never before experienced!

### EVENING UPPER MOUNTAIN TOUR

Saturday, 4:45 pm

Tours begin Saturday 12/23/23

### TOP OF MORSE FIREWORKS TRIP

Thursday, 7:15 pm

Tours begin Thursday 12/28/23.

\$69 per person, recommended for ages 6 & older. Children under 18 must be accompanied by an adult. Weather permitting. Advance registration required, stop by the Guest Service Desk or call ext. 1293.

Additional trips may be added once the scheduled departures are full. Please check with the Guest Service Desk, ext. 1293, for more information and additional times.







# FIRST CHAIR TO LAST LIGHT

---

A SKI PATROL PARENT CHRONICLES THE  
BOND OF THE MOUNTAIN FAMILY

---

6 am on a characteristically chilly November Saturday in Northern Vermont is not a time that one expects to see a teenager bounding out the door to start her day. But this was not a typical day for this typical teenager. It was her first day as a Young Adult Patroller with Smugglers' Notch Ski Patrol, it was the first day of training, and she was eager to get started.

I attended a hiring clinic for Smugglers' ski school on a similar morning in 1995. That morning I drove to Smuggs from Burlington with a sense of anticipation similar to what I saw from my daughter headed to ski patrol training. The one difference is that my daughter knew exactly what she was getting into; she was raised at Smuggs, and Smuggs is her family. And at the core of the extended Smuggs family is her immediate family, the Ski Patrol.

by RENA PERKINS



“WHERE OTHERS SEE  
A MOUNTAIN, WE SEE A  
COMMUNITY, A CLASSROOM,  
AND A HOME.”



Smuggs Ski Patrol, like most others in the eastern US, is made up primarily of volunteers. There is a small group of full-time paid staff, but the heart and soul of Smuggs Ski Patrol are the “volleys.” These are individuals who complete hours of training, put themselves at risk of physical and emotional trauma, and leave their homes for hours upon hours to serve the skiing and riding public for no compensation other than a season pass and an entry to the tightly knit group that is Ski Patrol.

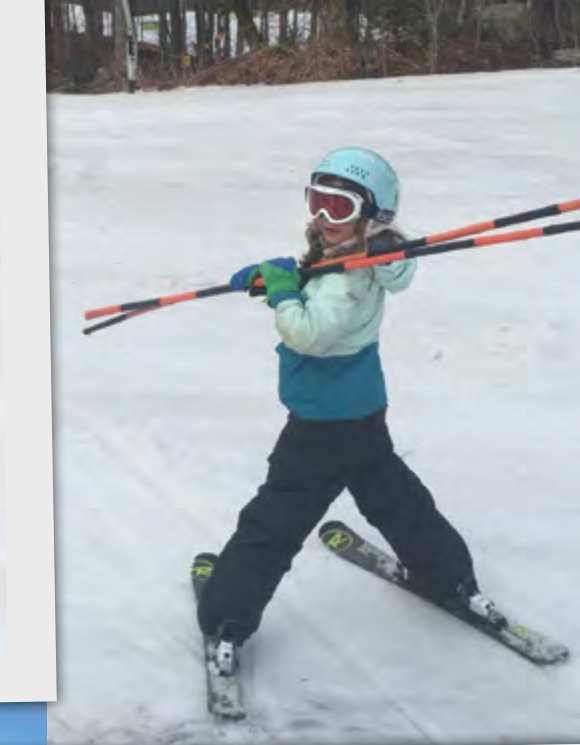
When my daughter first expressed interest in patrolling at age 13, I was wary. It’s not like the movies, all big air and snowmobiles, like an arctic version of Baywatch. There’s a reason there aren’t any Ski Patrol reality shows. But I didn’t want to discourage her, because I truly believe that I have the best job on the mountain. So I decided to show her what a real day in the life of a patroller looks like:

“IT’S NOT LIKE THE  
MOVIES, ALL BIG AIR  
AND SNOWMOBILES,  
LIKE AN ARCTIC VERSION  
OF BAYWATCH.”

At around 6:45 am the kid and I arrive at the boot room, affectionately termed “The Chalet” to get ready to load the lift at 7:20. Early in the season, the patrol day begins and ends in the dark. As the patrollers assigned to Sterling lift hike up to load for our first

run, milk run, we note any snow cats still out grooming trails, and look for running snow guns. If it’s snowed overnight, patrol helps the lift operators sweep snow from chairs and shovel out the ramp. The kid rides the lift with another Young Adult Patroller on the hill today, and I ride with one of the volunteers

whom I haven’t seen in a while. We catch up on the lift ride, and when we reach the top, we meet in the top building to check all first aid and rescue supplies including oxygen, defibrillator, backcountry rescue gear, lift evacuation gear, and toboggans. Doors and sheds are shoveled out, and warning and public safety signage is drilled into the snow. The mountain captain for the day has communicated with grooming,



“THE LIFE OF A SKI  
PATROLLER: BETWEEN  
ADRENALINE RUSHES  
AND HEARTWARMING  
MOMENTS.”



# SMUGGS IS A DARN TOUGH RESORT



AVAILABLE AT  
3 MOUNTAIN OUTFITTERS &  
3 MOUNTAIN EQUIPMENT

STILL MADE IN VT, USA  
GUARANTEED FOR LIFE



lift ops, and mountain management and creates a plan for opening and closing trails. This morning the kid and I are assigned to check Pipeline, a narrow trail that tumbles over several ledges along its way down the mountain.

After hearing from the mountain captain what the trail conditions were like the previous day, we determine what we will need to mark trail hazards. We attach a large coil of yellow and black rope to our packs and stuff several orange discs into each of our jackets. I pick up a couple of sticks of bamboo, slightly dreading skiing this trail while carrying it. Signage is needed at the top of the first pitch of Pipeline if there are any unexpected hazards below. We can't see the entire trail from the top, but having past knowledge of this area, I know where the possible problems could be. I send the kid down to check and call back to me to confirm. This is a good learning opportunity for her, as one of the most important skills in patrolling is the ability to assess potential hazards on the trail.

After a couple of minutes, she calls up on the radio: the trail is in good shape, but has bare spots in what we know are the usual areas. She says to post "experts only" at the top, but that the trail can stay open. By using the radio to communicate this information, she ensures that the other patrollers on the mountain as well as patrol dispatch and mountain management are updated. I check my

watch before heading down to her: it's 8:00 and the lift is now loading members of the public. This means that in less than 15 minutes, skiers and riders will be on the hill and we have to have our work finished by then.

We make our way down the trail, sometimes leap-frogging as we did when checking the first pitch, sometimes working together to tighten up a rope line or replace sticks of bamboo that have been knocked down, skied over, or hit by a groomer. We exit Pipeline to see snowmaking operations in full swing on Black Snake. Several Sterling patrollers are marking a large snow pile or "whale" that is not easily visible in the fog created by the running snow guns.

We ski across the end of Black Snake to the top of the Birch Run terrain park. There is a complex web of rope, bamboo, and heavy metal signs marking the park, and we have heard on the radio that extra supplies are needed to complete the gate setup. We click out of our skis and unpack our coil of rope and disks

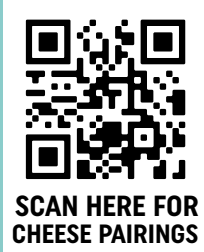
"IN THE  
WORLD  
OF SKI  
PATROL,  
WE'RE  
NOT JUST  
GUARDIANS  
OF THE  
SLOPES,  
WE'RE  
BUILDERS  
OF BONDS."





# ELEVATE YOUR APRÈS CHEESE BOARD

As New Englanders, we know a thing or two about the après scene. With 7g of protein per serving and naturally lactose-free, Cabot cheddars are the perfect accompaniment to a day spent exploring.



SCAN HERE FOR CHEESE PAIRINGS



to help out. One patroller is using a drill to put up bamboo and the kid gets out her multi-tool to cut the rope down to size, being sure to apply tape to each end so that the three-strand rope won't unravel.

When we finally arrive at the Base Lodge, we ski around back to the aid room where patrol dispatch is located. The dispatcher is a jack-of-all-trades who must know the intricacies of mountain terrain, lifts, grooming, and snowmaking. As well, dispatchers have to have excellent communication and organizational skills as they juggle phone and radio calls, reports from patrollers coming off the hill, injuries and medical events, and coordination with emergency medical services. It's also helpful if they can make good coffee.

After the scramble of milk run is over, we spend the rest of our morning skiing and checking for changes in trail conditions and sitting in the top building in the event that there is an accident on the hill. We have just arranged our lunches on the space heater for the long, slow process of preparing a meal in a building with no electricity or plumbing when a call comes over the radio from dispatch. There is a report of an injury at the bottom of Smugglers' Alley. I will go check on it and call back up to the top for

help if needed. I ask the patrollers in the building to take my lunch off the heater if it starts to burn, and head out the door.

I find the injured person on skiers' right of Smugglers' Alley. He appears to be alert and aware, but in pain. I determine that he has a leg injury, though I can't tell if it is broken or just bruised. Patrollers do not diagnose injuries or medical conditions; we're like UPS: we pack and ship. I report by radio to dispatch that I am on scene with a 43 year-old male with a lower leg injury and will need a toboggan brought down from the top to get him off the hill.

By the time I splint the patient's leg, help him arrange a ride to the hospital for an x-ray, fill out the accident form, and ride the lift back up to the top, it's 3:00 and my lunch resembles a charcoal briquet. No one noticed that it was burning. I settle for some spicy peanuts that have been stashed in my pack for at least a year.

At 3:45 a patroller goes to the top of the lift to relieve the top operator who then rides the lift down. The patroller shuts the lift off, making sure that the chairs are properly arranged on the ramp and lift towers so that they do not damage the lift and grooming can work around them. Once the lift is fully unloaded and

**"FROM THE  
FIRST LIFT  
TO THE  
LAST LIGHT,  
EVERY RUN TELLS  
A STORY OF  
ADVENTURE AND  
CAMARADERIE."**





## Slide into Fun with SNOW SPORT UNIVERSITY!

Whether you're a beginner or a seasoned pro, our expert instructors are here to guide you on your winter sports journey.



**FOR ALL AGES:** From toddlers to grandparents, our lessons cater to every member of the family. It's never too early or too late to start!

**ANY ABILITY WELCOME:** Never stood on skis or a snowboard before? No problem! Or are you looking to perfect that tricky maneuver? We've got you covered.

**SAFE & FUN LEARNING ENVIRONMENT:** Our top priority is your safety and enjoyment. We provide a supportive atmosphere where mistakes are just part of the learning process.

**BEAUTIFUL MOUNTAIN LOCATIONS:** Learn surrounded by breathtaking scenery that inspires and motivates.

**FLEXIBLE SCHEDULING:** We offer a variety of lesson times to fit into your busy vacation schedule.

*Your Mountain Adventure Awaits!*

**Sign-Up Today and Glide into a New Experience with Snow Sport U!**

*Save time when you book online!*



stopped, it's time for my favorite run of the day: sweep. Each patroller chooses a trail or combination of trails to ski and check for guests still making their way down.

Sweepers move down the mountain together, stopping at trail crossings to meet patrollers on other trails. Along the way, I will move any bamboo or ropes that could get in the way of the groomers, note any change in trail conditions to relate to tomorrow's crew, and enjoy the peace of having the mountain to myself. I'm sweeping Pipeline, since I checked it that morning, and the kid is sweeping Upper Treasure. We acknowledge each other with a click of our poles as she skis past me on Black Snake and veers off towards Exhibition.

When we get to the bottom, it's almost completely dark, and I am happy I remembered clear lenses for my goggles, as it is starting to snow. The kid is moving a large orange sign to the side of the trail with the help of a veteran patroller who has become one of her favorites. Seeing that all patrollers have completed their sweeps and are off the hill, the mountain captain relays to dispatch by radio that Sterling sweep is down.

I've often likened being a member of this crew to having 50 siblings, with all of the rivalry, drama, and unconditional support associated. In my 25 years patrolling, these people have been my greatest advocates and fiercest critics: sometimes both of these at once. But that's how family works and I'm delighted that

my daughter is being welcomed into this one. We heft our skis onto our shoulders for the walk down to the chalet as our radios crackle for the final time of the day: "Dispatch to all units: Sweep is in. Have a good night."

The kid starts her first season as a Young Adult Patroller this winter at the same age that one of her newfound friends began patrolling in 1972. After growing up in the chalet and shadowing the patrol since she could ride the chairlift, she is confident in her decision to patrol and is already thinking about the future: what happens if she wants to go away for college? How will she maintain the connection? I'm confident that she will find a way, as we always do when it comes to family.

*Meet Rena Perkins, Smugglers' resident slope superhero and versatile ski patroller, who's tackled more roles than a Swiss Army knife! Her daughter Coco, a skiing whiz since she was knee-high to a snowman (18 months, to be exact), now juggles hats as a ski patroller, instructor, and the coolest camp counselor on the slopes. They're the dynamic duo of downhill!*



"SKIING ISN'T JUST A SPORT FOR US; IT'S A LEGACY PASSED DOWN THROUGH THE PATROL FAMILY."





# FUN ZONE 2.0

Smugglers' one-of-a-kind indoor playground for all ages!

## THE OZONE

- Inflatables
- Ping-pong
- Mini-golf
- Little's Loft
- Tabletop games

## THE GO ZONE

- 30-foot transparent climbing tower
- Leap of Faith platform jump
- Warrior Course

**PLUS ...**  
Laser Tag and Arcade!



## BONUS DOLLAR DEALS

Spend \$20, **bonus \$2**  
Spend \$25, **bonus \$3**  
Spend \$35, **bonus \$5**

Spend \$50, **bonus \$8**  
Spend \$100, **bonus \$20**

*Your best value!*

SMUGGS.COM/FUNZONE EXT. 1271

# Join us for KIDS' NIGHT OUT!

Parents enjoy a night out while the kids have a blast at FunZone 2.0!

TUESDAY 4PM - 9PM • AGES 5-12



For \$65 per child, they'll get dinner, an arcade card, Ozone access, Laser Tag, movies, treats, and attentive staff. Reservations required 24 hours in advance, and socks are a must! Call ext. 1173 for more info.

Sign-up at [smuggs.com/register](http://smuggs.com/register)

## TOP OF THE NOTCH SNOWSHOE ADVENTURE DINNER



A dramatic weekly gourmet dining feature atop Sterling Mountain for adults. The Sterling lift transports you to the Top of The Notch — a candlelit mountain cabin. After dinner, work off those calories with a 40-minute snowshoe down to the Base Lodge.

**\$90 per person. Ages 18 & older**  
**Tuesday 4:00 pm - 8:30 pm**

Advance registration is required. Register at the Guest Service Desk or online at [smuggs.com/register](http://smuggs.com/register)

Function will be cancelled in the event of severe weather. Sign-up deadline Monday at 5:00 pm.



# WINTER MARKET

*Where community, culture, and creativity come alive!*

Discover an extraordinary selection of Vermont's best: indulge in fresh, farm-to-table meats, savor handcrafted desserts, and explore an array of unique crafts and jewelry. Our dedicated farmers and artisans will be there to showcase their herbal products, bespoke clothing, and much more.

Join us **MONDAY** from 12:00 noon to 3:00 pm at **FunZone 2.0 Party Room**

December 18 & 26, January 2, 22, & 29,  
February 12, 19, & 26, March 4, 11 & 18

*Don't miss this chance to immerse yourself in the local charm and spirit of Vermont craftsmanship*







# HAUNTED HISTORY WALK

A STORYTELLING STROLL THROUGH  
THE WOODS AT NIGHT

**W**HAT'S THE FIRST THING YOU MAY NOTICE ABOUT BEING IN THE VERMONT WOODS AT NIGHT? Well, unless there's a moon, it's really dark. You may spy a bit of the resort's lighting through the trees, but look away from that glow, and it's dark. Perhaps the darkest dark you may ever have experienced. And if there's a moon, the light will astonish you, as it illuminates the woods and creates all sorts of interesting shadows that flicker across your peripheral vision, causing you to wonder, *"Did something move over there?"*

by KAREN BOUSHIE



# YOU MAY OBSERVE THAT YOUR SENSES ARE HEIGHTENED.

“I felt like I’d been invited to partake in a century old secret.”

Another thing is the quiet. You may hear a few sounds from the Village, or from vehicles on Route 108, but the noises that people make as they go about enjoying their vacation are not going to be what you focus your attention on out in the woods. You’re more likely to focus on noises immediately around you, noises of nature: wind, rattling branches, an owl’s hoot, the crunch of snow as the group walks, or perhaps from something sharing the woods.

You may observe that your senses are heightened.

So here you are, with your fellow adventurers, in the dark, on a trail, in the woods. Perfectly primed to take in a few eerie and mysterious tales shared by your guide, Ron Carter.

If you are acquainted with Ron in his role as all-around entertainer and Friendly Pirate at Smugglers’, you know that he is a master storyteller – just check out his Friendly Pirate song lyrics. Ron brings those storytelling skills to the Haunted History Walk, creating a rich web of tales drawn from local smuggling lore, historical nuggets and indigenous folk tales, and his own knowledge of the area and local residents.

With his storytelling, Ron follows a sweeping chronology that begins in the Ice Age and marches to the present, including stories from 1816 (the year summer never came to Vermont) as well as 1930s Prohibition exploits. You might

hear about the Civil War era lovers united at last – in death. Or the fate of the crew of the smuggling ship Black Snake when the law caught up with them. There might even be a bit of spontaneous story sharing; according to Ron, guests on the tour are sometimes inspired to share their own ghost stories. The hour to 90 minutes the Haunted History Walk group spends outdoors on the trail is likely to be story-packed.

Smugglers’ guest Marie Raftery took part in the walk last winter and highly recommends the outing. She says, “It was a wonderful way to spend an evening. As someone totally into the spooktacular as well as some cool Vermont history, the Haunted History Walk was an automatic “yes” for me. Ron is great at reading the comfort level of the group and adjusting to ensure that everyone leaves with their desired amount of heebie jeebies. And of course, the atmosphere is unforgettable. Walking through the quiet woods with only the sound of snowy footsteps and scary stories adds to the eeriness of the experience. The view of the sky is unreal. I was lucky enough to do the walk on a full moon. Walking through the forest at night with only stars, lanterns, and stories to lead the way – I felt like I’d been invited to partake in a century old secret.”





**Build Your Own Boutique Event**  
(ideal for groups of 50 or less people)

Affordable meetings, family gatherings, rehearsal dinners and more!

- Events for all seasons featuring **hearthstone's Ultimate Outdoor Patio**

- Incredible mountain view setting

- preferred caterer options



916 Vermont Route 108 S.  
Jeffersonville, VT 05464  
802.324.0410  
carriagehouseeventvenue.com

**MARVIN'S COUNTRY STORE - BUTTERNUT MOUNTAIN FARM STORE**

is a mainstay of downtown Johnson, Vermont. For 30 years it is focused on all things maple. Maple is sold in every form conceivable: fudge, candy, sauce, cream,

brittle, popcorn, cookies, mustard, salad dressing and more. Visit and discover all of our favorite products from Vermont and beyond. Just minutes from Smugglers' Notch and Stowe, Vermont.



**MARVIN'S COUNTRY STORE**

31 LOWER MAIN STREET, WEST, JOHNSON, VT 05656 MON-SAT: 9:00am - 5:30pm & SUNDAY: 11:00am - 4:00pm  
[802] 635-7483 | [800] 899-6349 marvincountrystore.com

**DISCOVER HAUNTED HISTORIES ON OUR SPOOKY WINTER WOODS WALK!**

As night descends, join us for a chilling journey through the winter forest, where echoes of the past linger among the shadows.

Unearth the haunted tales hidden beneath the frosty canopy and dare to explore the eerie, mysterious trails. Ready for an adventure that weaves history with mystery? Sign up now and walk the path less traveled, where every step tells a ghostly story.

*The Haunted History Walk is on Wednesdays from 6:00 pm – 8:00 pm. Lanterns are provided. The program is open to ages 10 & older. Please register at Guest Service Desk. The group meets at McGovern Lodge, the ArborTrek welcome center, located at 1239 Edwards Road. Please dress for the weather.*

**ARE YOU READY FOR AN ADVENTURE THAT'S MORE THAN JUST A WALK IN THE WOODS?**

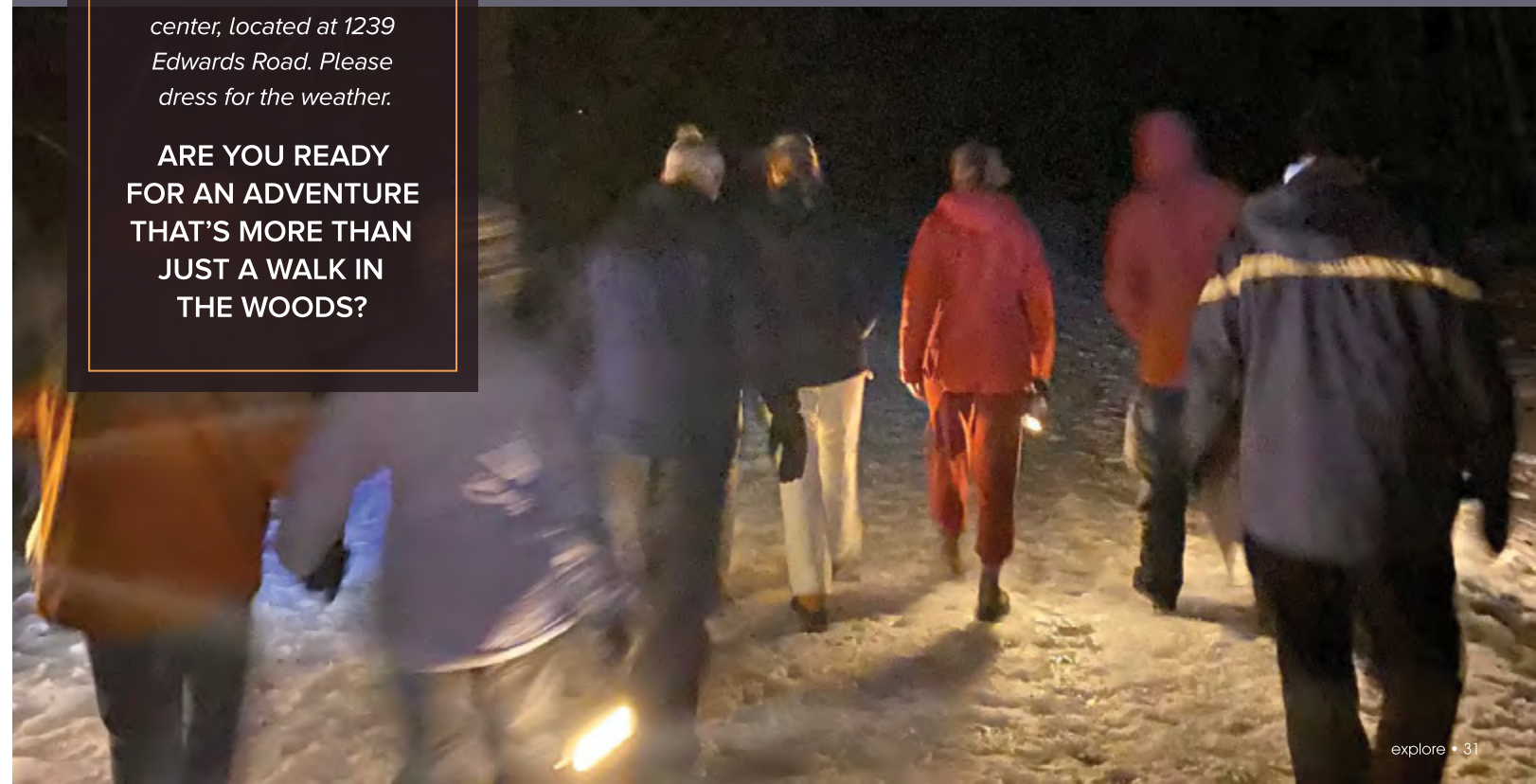
The idea for the Haunted History Walk came from Activities Department manager Chris Dunn. Chris had been reading about tours around the country that focus on horror or ghosts or true crime. "I figured that we have a pretty good setting here, being in the remote woods and mountains, and that setting easily lends itself to spooky tales. I felt it was something we should try," Chris remembers. The walk debuted last winter and continued with summer and fall versions.

Chris's suggestion was spot on because many people have a fascination for spooky tales and the shivers those tales produce. This interest in ghost stories, haunted houses, crime thrillers, scary roller coasters, and the like falls under the phenomenon known as "recreational fear." Recreational fear is essentially playing with fear; experiencing fear in safe situations that allow a thrill while maintaining psychological distance.

The phenomenon of recreational fear is being studied at — where else? — the Recreational Fear Lab at Denmark's Aarhus University. And interestingly, the occasional shiver of fear from an experience you have chosen to be a part of may actually be good for you, according to recent research. The lab's director Mathias Clasen writes in *The New Science of Recreational Fear*, "It is a way to administer an enjoyable shot of manageable fear, which lets people build resilience and coping skills — and mother nature was wise enough to construct our species in such a way to make the process enjoyable."

Haunted History is your chance to experience recreational fear Smuggs-style ... and live to tell the tale.

*Karen Boushie is a communications specialist who lives in Virginia.*







GREEN MOUNTAIN

# Deli

Made to order hot and cold subs, snacks, chips, drinks, and more!

Cafeteria-style dining.  
Located in Smugglers' Village Lodge. Ext. 1141



Scan for more info!

Opening for the winter season on December 26<sup>th</sup>



## VILLAGE PIZZERIA

SERVING FRESH, FLAVORFUL,

# PIZZA

WITH ALL YOUR FAVORITE TOPPINGS!

### PLUS ...

APPETIZERS, SANDWICHES, FRESH SALADS,  
PIZZA-BY-THE-SLICE, BEVERAGES & MORE!

NEW THIS WINTER  
TAKE & BAKE PIZZA!

SELECTION OF BEER, WINE, CIDER & SELTZER  
AVAILABLE FOR DINING IN OR TAKING OUT.

### DINE-IN OR TAKE-OUT

LOCATED IN SMUGGLERS' VILLAGE LODGE, EXT. 1142



Scan THE QR CODE  
WITH YOUR PHONE FOR THE CURRENT  
MENU AND HOURS OF OPERATION



JOIN US AT OUR PUB & BREWERY  
FOR A QUINTESSENTIAL  
VERMONT EXPERIENCE,  
FEATURING SEASONAL PUB FARE, DAILY SPECIALS  
& LIMITED PUB ONLY BEER RELEASES

## OPEN SEVEN DAYS A WEEK!



NO TRIP TO VERMONT IS  
COMPLETE WITHOUT A VISIT TO



Located in the Village Lodge in Smugglers' Village Center.



Scan for current hours of operation



## LONG TRAIL

BREWING CO.

# Take a Hike!

TO BRIDGEWATER CORNERS, VT  
OPEN SEVEN DAYS A WEEK

PLEASE VISIT [LONGTRAIL.COM](http://LONGTRAIL.COM) FOR DAILY PUB HOURS,  
SPECIAL EVENTS & HOLIDAY HOURS.

5520 US RTE. 4 | BRIDGEWATER CORNERS, VERMONT | (802) 672-5011 | [LONGTRAIL.COM](http://LONGTRAIL.COM)



# POWDER CHEFS

Whipping  
Up Winter  
One Flake  
At A Time

Imagine this: it's your first run of the season and you're a little nervous, as you always are on the first run of the season. You are pretty sure that you'll be able to safely navigate unloading the lift as long as there is snow. But as you move past mid-station on the Village lift, you look apprehensively at the bare ground beneath you. You know that they wouldn't send you up here to try to ski down on grass and moss ... would they?

Of course they wouldn't. Ma Nature doesn't always have the snowsports community's best interests at heart, and that's fine, she's got a lot on her mind these days. We'll be okay; we have snowmakers.

by RENA PERKINS

“The snowmakers take compliments with an ‘aw, shucks’ attitude, but it is evident that **THIS CREW TAKES IMMENSE PRIDE IN THEIR WORK.**”





## A SNOWMAKER:

A magical winter wizard whose primary hobby involves secretly converting water into fluffy, cold confetti overnight, often leading to unexpected spontaneous snowball fights. **This mystical artisan works tirelessly, crafting a playground of powdery white magic, ideal for skiing and snowboarding escapades.**

Making snow may be a job, but making great snow is an art. We've all experienced not-so-great snow: the sticky, the heavy and wet, the bulletproof glass-esque that can euphemistically be described as "durable." But memories of those conditions fade away when we encounter the great snow: the fluffy, the carvable, the pillowy soft and forgiving. Both types can come from heaven, but they can also come from hoses. A skilled snowmaking team can create snow that rivals what falls from the sky.

Making great snow is a lot like making a great meal. Just as a chef must have the right equipment, well-trained support staff, fresh ingredients, and impeccable timing to prepare a high-end meal, snowmakers require that their pumps, compressors, snowmobiles, and snow guns are all working properly as they create their product within the ever-changing constraints of temperature, humidity, wind, precipitation, and availability of water and air pressure.

**THE PREP:** In a restaurant, the chef creates a menu and shops for ingredients. Hours before service, the oven is preheated and prep cooks chop up vegetables and assemble salads. Servers polish silverware and smooth on tablecloths. On the ski hill, snowmakers check the weather and note the current temperature, humidity, and wind conditions as well as the forecast for all of these at the elevations where they will be working for the next 12 hours. Then they create the menu: a cold dry night with light winds is optimal, but just a small change in any of the variables will change the way that their snow will form. Once the plan is made, they fire up the water pumps that will move the water to the top of the mountain. At Smuggs, two of these pumps are 7 miles away pumping water up from





“MAKING SNOW MAY BE A JOB, BUT MAKING GREAT SNOW IS AN ART.”

the Lamoille river in Jeffersonville. Because of the distance that the water must travel, and the large area that needs to be staged with hoses and snow guns, the prep for making snow can take several hours. While the lines charge, crews go out on the hill to transport and attach hoses

that run from water and air hydrants on the side of the trail to the snow guns nearby. Due to the risk of freezing when not operating the entire system must be drained and charged each time snow is made.

**The fire-up:** When a server takes an order from a guest, it is communicated to the kitchen, and the chef springs into action. Burners are lit, saucepans hit stoves, and orders are given as to what to “fire” and when. When it’s time to fire up a snowmaking line, it takes a coordinated effort from the snowmakers on the hill and the controller who is monitoring the bank of computer screens that show the air and water pressure in the lines, operations of water pumps and air compressors, and changing weather conditions on the hill. Up on the mountain, snowmakers work their way down from the top, opening the water line followed by the air line on each gun and adjusting the mix to arrive at the desired consistency of snow being produced at this

time. In a perfect world, the first layer of snowmaking snow won’t see ski or snowboard edges until the end of the season. This is production snow. With its high water content, production snow makes great snowballs when it’s first put down, and when it is groomed out creates the perfect base for the softer stuff you love to ski on. As elevation decreases, temperature, humidity, and wind speed and direction may change, meaning that the snow-air mix will need to be different on each gun, and guns may have to be turned to avoid having the freshly made snow land in the woods or on a lift. Communication with the controller can help those on the hill adjust the guns to the proper mix and position, but the tried and true method for snowmakers is to stand under the gun with their arms out and let the snow fall on their black jackets. They assess the snow quality as they bend their arms at the elbow and watch the flakes fall off of their sleeves... much as a chef checks a sauce by dipping in a spoon and watching the sauce drip back into the pan while inhaling its aroma.



## UNDER PRESSURE

So what does 975 PSI (pounds per square inch) actually mean?

**Super Soaker on Steroids:** Imagine your garden-variety Super Soaker, but pumped up to 975 PSI. You wouldn’t just be squirting water across the yard; you’d be power-washing your neighbor’s house... from your own backyard.

**The Garden Hose of Doom:** Think of a regular garden hose. At 975 PSI, watering your plants would be less about a gentle sprinkle and more about blasting them into the next season. Your tulips wouldn’t stand a chance.

**Air Mattress Inflation Gone Wild:** If you tried to inflate an air mattress with 975 PSI, you wouldn’t get a comfy bed. Instead, you’d launch a nylon rocket. Goodbye, peaceful camping trip; hello, unexpected flight!

**Fire Extinguisher on Overdrive:** Fire extinguishers release contents under pressure, but nowhere near 975 PSI. If they did, you wouldn’t just put out the fire; you’d redecorate the entire room with foam.

**Pump Bike Tires Like a Pro (or Not):** Pumping bike tires requires a pressure of around 60-80 PSI for road bikes. At 975 PSI, you’d not only pump the tires, but probably send the bike on a journey to the stratosphere.





# VERMONT'S MOUNTAIN SPIRIT™



**NEW!**  
Vodka Sodas

PAIRS WELL WITH FRESH SNOW, FRIENDS, AND MOUNTAIN AIR.

Come visit one of our five tasting rooms, try a sample, and grab your favorite spirit. You deserve it.

JEFFERSONVILLE • WATERBURY • STOWE  
BURLINGTON • MANCHESTER

SmugglersNotchDistillery.com

“A SKILLED SNOWMAKING TEAM CAN CREATE SNOW THAT RIVALS WHAT FALLS FROM THE SKY.”

adds the garnish and summons a server to run the food out to the dining room. As the restaurant guests eat, servers check in periodically to fill water glasses and clear empty plates. While snowmaking operations are in progress, snowmakers move from top to bottom and from gun to gun, checking the snow, making adjustments, and often putting in 70,000 steps in a shift. These aren't steps you accrue on a walk on the rail trail; these are taken in snow several feet deep. And while this post-holing is exhausting, it does at least help snowmakers stay warm. As the snow accumulates, Control keeps an eye on the weather, water and air availability, and the clock, and communicates what changes need to be made to operations so that the proper consistencies of snow are layered up in preparation for being groomed out or skied. By the time one gun run is finished, conditions have changed, and the crew sets off up the hill to start again from the top.

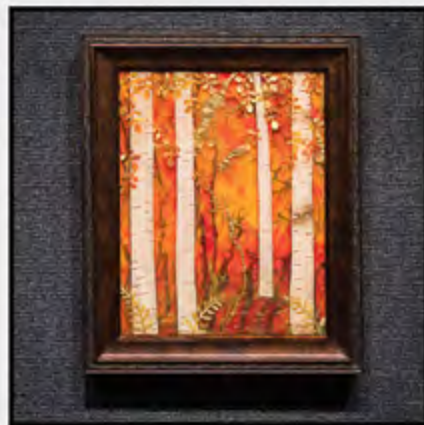
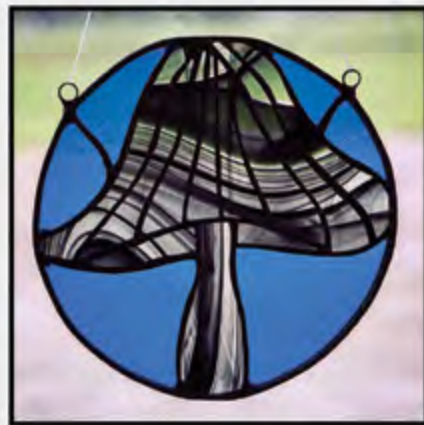
**Service:** When the meal receives the chef's approval, an expeditor

**The cleanup:** After service, the kitchen sets to work cleaning up all evidence of the meal prep so that the next shift will have a clean working space. Servers, cooks, expeditors, and dishwashers work together to clean dishes and pans, wipe down counters, refill salt shakers, and restock the kitchen. When snowmaking shuts down, guns need to be shut off in sequence, and the water lines need to be blown out and drained. Hoses are rolled and brought down to the shop, and the snowmakers meet at the base to dry off, thaw out, and grab something to eat. As soon as conditions permit, the arduous process will start again.

**A kitchen has its share of hazards:** a chef could get a bad burn or a deep cut from one of the razor-sharp chef's knives, a server could slip after stepping on a dropped mushroom cap, or a soufflé could tragically fall. Snowmaking, however, can easily turn deadly. With pressures of up to 110 PSI for air and 975 PSI for water, any weakness in the system can become an explosion in the making. When an individual is caught in the blast,







*The Artisan Shop At Iris Lane Studios*

**16 IRIS LANE, JEFFERSONVILLE, VERMONT**

**3.4 MILES DOWNHILL OF SMUGGS ~ 802-730-3819**



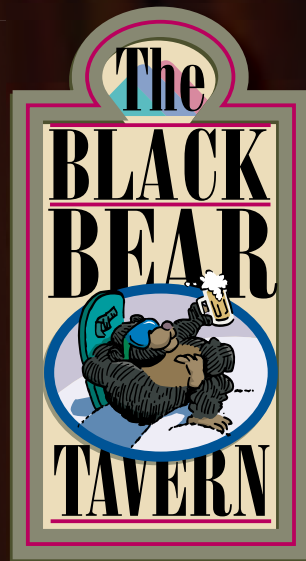
## “IT TAKES A SPECIAL KIND OF PERSON TO BE A SNOWMAKER”

serious injuries almost certainly result. Add in the risks of walking and operating snowmobiles in low visibility and unsteady snow

conditions, working in the same areas as grooming equipment and skier traffic, and spending hours upon hours in the elements, and the snowmaker’s job sounds like a sketchy deal. So what makes these individuals seek out this work, and keep at it for years? It takes a special kind of person. When asked why they do this, snowmakers’ responses vary: the challenge of a job that is different every day, their coworkers, the reward of testing their product on skis or a snowboard, the food served up by one of the crew who is designated “head chef,” the conversations had around the grill as he cooks dinner. On one recent evening, the conversation was about a snowmaking shift from the previous season in which the snow that was made to open a favorite trail for the first time was an ingenious mix of soft and durable, with an almost indiscernible crust that protected the fluffy flakes beneath. The snowmakers take compliments with an “aw, shucks” attitude, but it is evident that this crew takes immense pride in their work, and with good reason. Especially in the Eastern US, there would be no skiing or riding without them; so if you were able to get out on the hill today, thank a snowmaker.

*Rena Perkins is the quintessential snow aficionado whose love for winter’s white splendor knows no bounds. Rena’s fascination with snow began as a toddler, when she would spend hours marveling at the magical snowflakes dancing outside her window. As she grew, so did her passion for all things snowy, leading her to become a connoisseur of snow guns – those marvelous machines that create winter wonderlands.*





Full bar and table service available for a selection of sandwiches, salads, snacks, soups, chili, apps, and beverages. Featuring the largest variety of beer and cider on the mountain with 28 varieties available (12 draft tap lines and 14 packaged offerings).

**Mon. - Sat., 10:00 am - 4:30 pm**  
**Sun. 10:00 am - 6:00 pm**  
 Located at the Madonna/Sterling Base Lodge



Join us on the weekend for promotional specials and live music on Sunday!



## The Family Table

Food and wine selections designed to appeal to a wide range of tastes, and enjoyed in a comfortable setting.

Thursday through Monday  
 Dinner 4:00 PM - 9:00 PM



802.644.8920 ♦ FamilyTableVT.com



4807 VT-15 Jeffersonville, Vermont

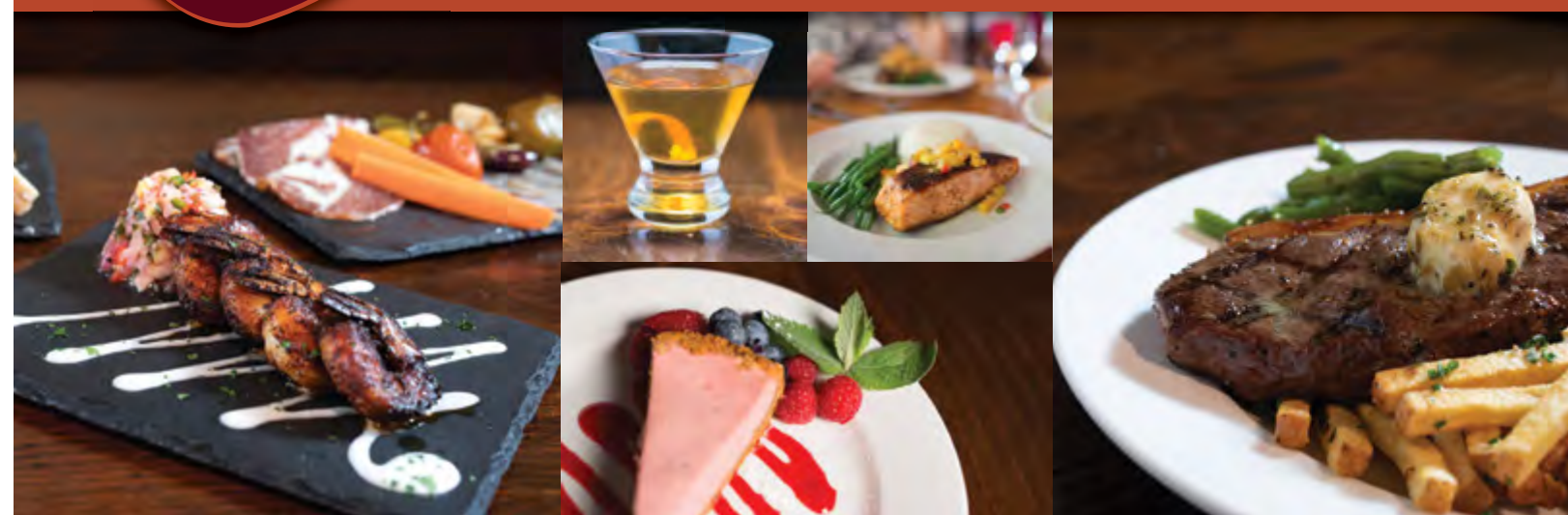


LOCATED IN THE HEART OF SMUGGLERS' VILLAGE - THE WHOLE FAMILY IS INVITED AND WE HAVE A COMPLETE CHILDREN'S MENU, TOO!



# The Hearth & Candle

## RESTAURANT



Enjoy the Hearth & Candle's cozy atmosphere for casual family dinners, or quiet white-tablecloth dining for adults only in the Birch Room. Our complete dinner menu features steaks, chicken, fresh fish, and seafood. We serve local organically grown vegetables and salads, and we'll tempt you with a delicious selection of homemade desserts. A full-service bar and extensive wine list will complement your dining experience, or you can relax with a cocktail at our cozy bar.

**MON. - SAT. • 5:00 PM - 9:30 PM**  
**802.644.1260**

RESERVATIONS RECOMMENDED FOR DINNER



HEARTHANDCANDLE.COM



Eat-in or call ahead for take-out ext. 1287

# REFUEL CAFÉ

AT THE FUNZONE 2.0



Refuel at the ReFuel Café with a delicious pizza, sandwich or burger. The café also serves snow cones, snacks, hot and cold drinks, a variety of beer, wine and much more!



Scan me to get current menu and hours of operation



# Green Peppers

at the Madonna/Sterling Base Lodge



The go-to place on the upper mountain for families looking for a less crowded spot with table service. Recharge your device with our **courtesy charging stations** while you enjoy something from our variety of soups, chili, salads, sandwiches, appetizers, variety of packaged beer, cider and hard seltzer, hot and cold beverages and snacks.

**OPEN WEEKENDS & HOLIDAYS.**



# MORSE MOUNTAIN Grille



### FAMILY FRIENDLY DINING!

Located in Smugglers' Village Center  
Take-out service and indoor dining available.

Reservations or call ahead seating is requested for all restaurant dining. Call 802-644-1247 or ext. 1247 from any house phone.

Scan me with your phone for the current menu and hours of operation!



# Martell's AT THE RED FOX

87 EDWARDS RD

(2 miles North on 108 from Smugglers' Notch)

Established in 2015 by the Martell family.

## FAMILY DINING

✦ OPEN Thursday - Tuesday ✦  
11am to 9pm • Closed Wednesday

✦ SERVING BRUNCH ✦  
Sundays 9am to 1pm

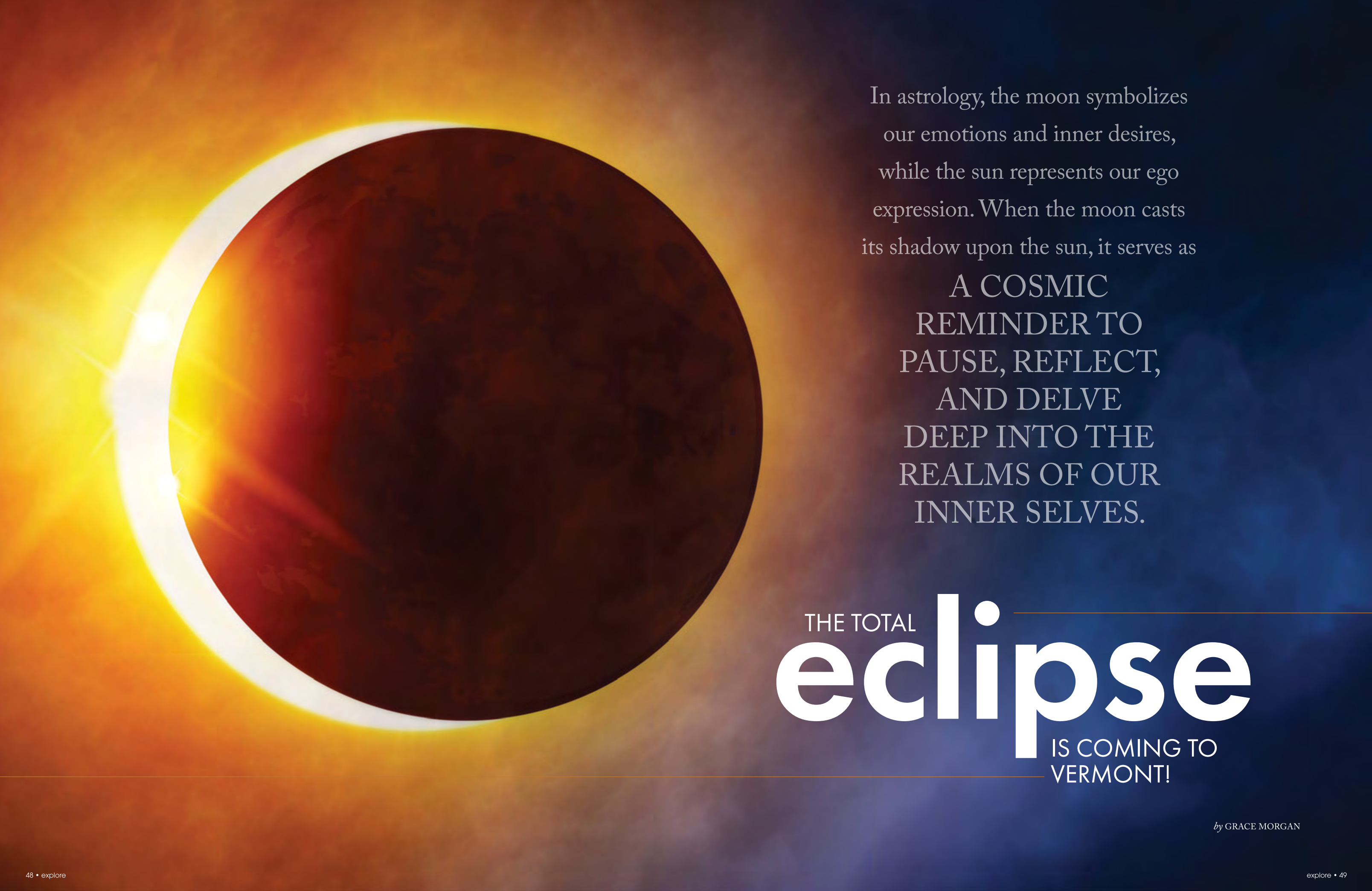
LIVE MUSIC AND LATE NIGHT  
PUB FARE AVAILABLE EVERY  
SATURDAY NIGHT!

Check us out on Facebook for nightly specials and entertainment.

**CALL US TODAY!**

802-644-5060 • martellsredfox.com





In astrology, the moon symbolizes our emotions and inner desires, while the sun represents our ego expression. When the moon casts its shadow upon the sun, it serves as

A COSMIC  
REMINDER TO  
PAUSE, REFLECT,  
AND DELVE  
DEEP INTO THE  
REALMS OF OUR  
INNER SELVES.

THE TOTAL  
**eclipse**  
IS COMING TO  
VERMONT!

by GRACE MORGAN



THE NEXT TOTAL SOLAR ECLIPSE WILL NOT OCCUR IN BURLINGTON UNTIL 2079, so be sure to start planning for this once-in-a-lifetime celestial experience!

As Vermonters turn their eyes to the sky on the afternoon of April 8, 2024, in Burlington, Johnson, Cambridge, Jeffersonville, Stowe, Waterbury, and other Vermont towns, the world around them will become completely dark for approximately three minutes. “Is this the end of the world?” you may ask. Thankfully, it’s just the total solar eclipse. A solar eclipse occurs when the Sun, Moon, and Earth align totally or partially. Solar eclipses occur about twice a year, but the population affected depends on geographical location at the time of the eclipse (NASA). It is estimated that the last total solar eclipse experienced in Burlington was in 1806 (Cyrus, et al., 2023).

For the upcoming solar eclipse in April, the Northern half of Vermont, the Adirondack region, and parts of New Hampshire will experience totality. For a short time, approximately three and a half minutes, the moon will completely cover the sun, creating complete darkness. A solar eclipse is a remarkable phenomenon that has occurred for millions of years. Historians believe that humans have studied and predicted when eclipses would happen since before the common era (BCE). During a total solar eclipse, one will experience various sensory events. When the solar eclipse reaches totality or complete darkness, you will feel the temperature drop, hear birds chirping

evening songs, and may even see nocturnal animals awaken. You may also see planets, large stars, and a 360-degree sunset appear in the sky. Viewers will be able to see the sun’s corona, the outermost part of the sun’s atmosphere, which is only visible to the naked eye during a solar eclipse. Since the corona is much hotter but has a density about 10 million times lower than the sun, it appears dimmer and less visible to the average person (NASA). Special instruments and photographs can capture the corona. However, one can safely look directly at the sun and view the corona without risk of retinal damage only when there is total darkness. Viewing the corona in person during an eclipse is a highly moving experience.

Eye safety during a solar eclipse is crucial and often overlooked. It is never safe to look directly at the sun without solar viewing glasses, even during a solar eclipse. You may think, “My sunglasses are so great, they’ll protect me!” Unfortunately, this is incorrect. According to NASA, average sunglasses, no matter how dark, do not adequately shield the human eyes. Viewing the sun directly without eye protection can cause instant damage and burn to your retina. Since the retina does not have pain sensitivity, the effects of the damage may have a delayed appearance (ARPANSA).

Luckily, we can safely view solar eclipses in a variety of ways. Safe solar viewing glasses, known as eclipse glasses, are the most commonly used protection method. Other well-known approaches include pinhole viewers (usually made using cereal boxes and aluminum foil) and sunoculars, which are binoculars designed for safely viewing the sun with special solar filters. In Vermont, several local institutions like ECHO, Leahy Center for Lake Champlain will distribute eclipse glasses and resources in the weeks leading up to the eclipse. To learn more about eclipse-related activities or where to find eclipse glasses in Vermont, visit the Eclipse Information page on the ECHO website ([echovermont.org](http://echovermont.org)) and the NASA Total Solar Eclipse page ([science.nasa.gov/eclipses](http://science.nasa.gov/eclipses)).

*Grace Morgan is a senior at the University of Vermont studying public communication from Mansfield, Massachusetts. She is currently working as a development and community outreach intern at ECHO, Leahy Center for Lake Champlain on the Burlington waterfront. Grace loves to ski, paint, and spend time with her friends and family. She is looking forward to graduating in 2024 and pursuing a career in fundraising and development.*

WHEN THE SOLAR ECLIPSE REACHES TOTALITY OR COMPLETE DARKNESS, you will feel the temperature drop, hear birds chirping evening songs, and may even see nocturnal animals awaken.



# Visions of Vermont Fine Art Gallery



Michael Graves 24"x30" "Morning Sunlight Jeff"

100 Main St Jeffersonville, Vt

Open by Chance or Appointment Call 802 760-7396 for Appointment

[www.visionsofvermont.com](http://www.visionsofvermont.com)

## The Forget-Me-Not Shop



**ROUTE 15 • JOHNSON, VERMONT**

(1½ miles west of the village)

Open 7 days a week: 10AM – 7PM

Famous Label, OFF PRICE Clothing for Men, Women & Teens

Discover the Magic  
of Snowflakes

# SNOWFLAKE BENTLEY EXHIBIT

at the Old Red Mill

HE SAW  
SOMETHING  
IN THE  
SNOWFLAKES  
which other men  
failed to see ...

Join us on an unforgettable journey to explore the unique artistry of Wilson "Snowflake" Bentley, a pioneer in snowflake photography. Whether you're a snowflake enthusiast or simply curious, our museum has something special in store for you.

**OLD MILL CRAFT/GIFT SHOP &  
THE BENTLEY MUSEUM**  
JERICHO, VERMONT

Thursday – Saturday  
11:00 am to 4:00 pm  
802.899.3225

[Jerichohistoricalsociety.org](http://Jerichohistoricalsociety.org)

Guided tours/additional times  
available by appointment. Email  
[info@jerichohistoricalsociety.org](mailto:info@jerichohistoricalsociety.org)



Upcoming events — fun for the whole family!

**EARTH + SPACETACULAR FESTIVAL**  
with eclipse-related programming,  
February 24 – March 5, 2024

And then an **ECLIPSE FESTIVAL**  
April 5-8 at ECHO.

ECHO, Leahy Center for Lake Champlain is a 501(c) non-profit organization. ECHO's mission is to inspire and engage families in the joy of scientific discovery, wonder of nature, and care of Lake Champlain.

**1 College Street Burlington VT**  
802-864-1848 • [echovt.org](http://echovt.org)

*Images featured on this page are from the October 2023 partial eclipse event and were provided for use by ECHO, Leahy Center for Lake Champlain*





# Snowflake Chocolates



Handcrafted in Vermont  
Family owned and operated since 1986

[SnowflakeChocolate.com](http://SnowflakeChocolate.com)

Experience Snowflake Chocolates hand-crafted confections and make our tradition your tradition.

Sea Salt Caramels \* Almond Butter Crunch Truffles \* Maple Creams \* Caramels \* Fudge

### FREE SAMPLES!

**FACTORY STORE:** 81A Vermont Route 15, Jericho, VT \* 802-899-3373  
*Stop in and watch us make chocolates!*

**RETAIL STORE:** The Blue Mall, 150 Dorset Street, South Burlington, VT \* 802-863-8306  
*Convenient to the airport!*



## TWO SISTERS MILL & MERCANTILE

143 Main Street  Jeffersonville

Sunday through Wednesday 11:00 am - 4:00 pm  
Thursday, Friday, & Saturday 9:00 am - 4:00 pm



- Yarn, Roving, Fiber
- Vermont Handmade Gifts
- Local Fiber Artwork
- Fiber Project Supplies
- Classes & Retreats
- Drop-In Fiber Hour
- Equipment Rental

[twosistersvermont.com](http://twosistersvermont.com) • 802.881.8997

## Brrr, it's bear-y cold out. No need to hibernate at Smuggs.

Venture out to refuel and stock-up on everything you need to make your vacation bear-rific!

### CAMBRIDGE VILLAGE MARKET

Located only 8 miles from Smuggs.



- LARGE BEER & WINE SELECTION
- FRESH PRODUCE
- VERMONT LOCAL MEATS
- FULL SERVICE DELI
- CONVENIENT GRAB-N-GO MEALS
- FRESH COFFEE TO GO
- FUEL AND MORE!



MONDAY- THURSDAY 5 AM - 8 PM • FRIDAY 5 AM - 9 PM  
SATURDAY 6 AM - 9 PM • SUNDAY 6 AM - 8 PM

802.644.2272 • [CAMBRIDGEVILLAGEMARKET.COM](http://CAMBRIDGEVILLAGEMARKET.COM)

113 S MAIN ST CAMBRIDGE, VT 05444



EXPERIENCE  
THE MAGIC OF  
**The Barn**




**Vermont Events Since 2008**


Boydenbarn.com 802.598.5509 CAMBRIDGE • VERMONT

Offering the largest selection of Vermont specialty foods, crafts & gift ideas in the area.



MAPLE SYRUP • MAPLE CREAM  
MAPLE CANDY • HONEY  
CHEDDAR & SMOKED CHEESE  
CLOTHING • SOUVENIRS

 Visit our year-round on-site Sugar House!

 Carrying Brown & Jenkins coffee

 We ship anywhere!

Open daily 9am - 5pm  
800.858.3121 • 802.644.5482

Located on Rte 15 W between  
Jeffersonville & Cambridge

3929 Vt Rte 15, Jeffersonville, VT



 /vermontmapleoutlet  
[VermontMapleOutlet.com](http://VermontMapleOutlet.com)



A chef in a white uniform is holding a plate of food. The background is a kitchen with various cooking equipment.

# COOKING UP A STORM

Troy Bellot's Flavorful Journey from FBI to  
Culinary Maestro at Smugglers' Notch

Join us for an insightful conversation with Troy Bellot, the new Director of Food and Beverage Operations at Smugglers' Notch Resort. A seasoned chef with a diverse background, Troy shares his journey from a Caribbean upbringing to his time with the FBI, and how these experiences shaped his culinary approach.

*by* KELLY MOHR



# FIDDLEHEAD BREWING COMPANY

SHELBURNE, VERMONT



MORSE MOUNTAIN GRILLE'S  
FRIED CHEESE CURDS:  
Cheese the day with  
these golden, crispy  
delights!



## “I’VE BEEN COOKING ALL MY LIFE.

It started with my grandmother on Sundays in Jamaica. She’s the foundation of a lot of it. There are so many French techniques that I’ve learned in formal education that my grandmother already taught me, but didn’t know the technique had a formal name.”

### BACKGROUND AND EARLY INFLUENCES

Troy was born in New York but spent his childhood moving across various Caribbean islands and parts of the U.S. due to his father’s medical career. These experiences, particularly in places like Dominica, Jamaica, and Barbados, deeply influenced his culinary style. His earliest cooking memories involve learning French cooking techniques from his grandmother in Jamaica, unknowingly mastering them before formally studying culinary arts.

### CAREER PATH AND CULINARY PHILOSOPHY

Despite an early interest in cooking, Troy initially pursued International Studies and Middle East Strategic Policy and was recruited by the FBI during college. After leaving the FBI due to family circumstances, he entered the culinary world formally, starting as a sous-chef for an Italian chef. His career progressed through various roles, including executive chef and general manager positions, leading to his current role at Smugglers’ Notch.

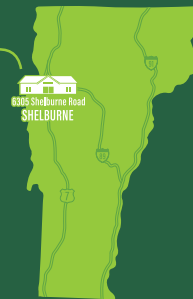
FIND US ON TAP AT  
BOOTLEGGERS’ LOUNGE  
& BLACK BEAR TAVERN

## VISIT OUR TASTING ROOM

Enjoy limited releases, specialty beers and growler fills when you stop at our tasting room in Shelburne, VT.

BRING IN THIS AD FOR A FREE FIDDLEHEAD CUSTOM GLASS\*

\*Offer valid until April 1st, 2024. While supplies last. One per person. 21+  
6305 Shelburne Road, Shelburne, VT 05482







ZEROGRAVITYBEER.COM  
@ZEROGRAVITYBEER



HIGH NOON. HARD SELTZER.

©2022 High Noon Sips Company, Modesto, CA. All rights reserved. Average Analysis per 12 fl. oz ALL FLAVORS: 100 Calories, 0 Protein, 0 Fat, Carbohydrates: Citrusfruit 2.5g, Black Cherry 7.5g, Pineapple 2.5g, Watermelon 2.5g.

MAY THE COLD  
KEEP YOUR  
COLD ONES COLD.



Featuring a large variety of draft and packaged domestic and craft brews, wine and specialty hot and cold drinks.

Located in Smugglers' Village Lodge, ext. 5017

Scan for current hours of operation and entertainment schedule!



“THE BEAUTY OF SMUGGS CAPTIVATED ME, SPARKING IDEAS AND A VISION FOR MAKING A SIGNIFICANT IMPACT. I saw its potential and felt drawn to what I could achieve here.”

**INNOVATIONS AT SMUGGLERS' NOTCH**  
At Smugglers' Notch, Troy is excited to introduce new dining experiences and innovative programs. His plans include a growler program, fresh dough pizza with a take-and-bake option, and a shift towards fresh, local ingredients. He aims to create signature dishes for the resort, enhancing its reputation as a culinary destination.

**PERSONAL LIFE AND COOKING PHILOSOPHY**  
Troy's personal life deeply intertwines with his cooking. He recalls fond memories of cooking with his children, using a globe to decide which country's cuisine to explore next. This practice not only enhanced their culinary skills but also their knowledge of different cultures.

**FUTURE PLANS AND VISION**  
Troy's vision for Smugglers' Notch extends beyond immediate changes.

He aims to evolve the resort into a food-forward destination, emphasizing quality and innovation in all culinary aspects. While he acknowledges that these changes will take time, he is optimistic about the future of the resort's food and beverage program.

As Troy spices up the resort with his innovative and globally-inspired dishes, it's an open invitation for food enthusiasts and guests alike to come and savor the unique flavors crafted by this culinary virtuoso. Don't miss the opportunity to indulge in Troy's culinary creations — your taste buds will thank you!

*Kelly Mohr, is originally from Long Island, NY. She made her way to Vermont after working for the Boston Bruins and is currently Smugglers' Communications Director. She lives in South Burlington with her longtime partner, JD, and the cutest and happiest dog ever, Quimby.*

**MORSE MOUNTAIN GRILLE'S CHICKEN POT PIE:**  
Where every bite whispers, "Winner, winner, chicken dinner!"





**SHOP ONLINE!**  
Have what you need, when you need it.

Whether you're looking for any of our on-Resort shopping options, purchasing a gift certificate for a loved one, or trying to replace your daughter's stuffed Billy Bob Bear you accidentally left on the train — we've got you covered!

[smuggs.com/shopping](http://smuggs.com/shopping)

**3 Mountain Equipment**

**IN TUNE WITH YOUR STYLE!**  
Whether you're a racer, cruiser or park pro — everyone can benefit from a fresh tune.

Our state of the art Wintersteiger Mercury tuning and service machine provides a precise stone grind that revitalizes ski/board bases to "like new" condition with custom patterns to match conditions.

**LOCATED IN SMUGGLERS' VILLAGE • EXTENSION 1257**  
**OPEN DAILY, Thurs. - Mon. 8:00 am - 8:00 pm,**  
**Tues. & Wed. 8:00 am - 5:00 pm**

**Lake Champlain CHOCOLATES®**

**Visit us on Main Street in Stowe!**

**STOWE | BURLINGTON | WATERBURY CENTER**

**St. Albans Rental Car**

**Rent a Toyota**  
701 Highgate Rd  
Saint Albans, VT 05478  
(802) 528-2200

Monday - Friday  
7:00 AM - 6:00 PM

Saturday  
7:30 AM - 5:00 PM

[www.saintalbarsrentalcar.com](http://www.saintalbarsrentalcar.com)  
[leads@saintalbarsrentalcar.com](mailto:leads@saintalbarsrentalcar.com)

Download the Toyota app to schedule your rental today!  
Sign in using your Toyota Owners credentials or create a new account!

## Why Rent With Us?

We make renting a car as easy as possible! Wherever, whenever you need a vehicle, Saint Albans Rental Car has got you covered. We are proud to offer these complimentary services:

- A modern rental fleet of new model Toyotas equipped with Toyota Safety Sense for your peace of mind.
- Rentals ARE equipped with snow tires during winter driving months.
- Professionally detailed rentals that are **GUARANTEED** smoke and pet hair free.
- 24-hour roadside assistance.
- Rental pick up and delivery.\* (\*Within 80 mile radius)
- UNLIMITED MILEAGE!**

**REQUIREMENTS**

- Proof of full coverage car insurance
- A valid driver's license
- A major credit card
- Age 21+

<b>Battery Jump Start</b>	<b>Lockout Protection</b>	<b>Emergency Fuel Delivery</b>
<b>Tire Service</b> Impaired tire will be replaced with your inflated spare.	<b>Winching</b> Extrication from any ditch, mud, sand or snow. Vehicle must be immediately adjacent to a regularly traveled road and capable of being serviced with standard servicing equipment.	<b>Towing</b> To the nearest Toyota dealership (or to the Toyota dealership of your choice within 25 miles of the nearest dealer).

❄️ 100% EMPLOYEE-OWNED ❄️ 100% NATURALLY CONDITIONED ❄️ 100% UNFILTERED ❄️ 100% VERMONT MADE ❄️

# PACK OF ALL TRADES

## MASTER OF FUN

**Switchback BREWING CO.**  
BURLINGTON, VT  
@SWITCHBACKBEER | SWITCHBACKVT.COM

**PICK UP THE SWITCHPACK VARIETY PACK IN STORES TODAY!**



**SOLAR POWER** Visit our Brewery, Tasting Room & VT Art Gallery

8 beers on tap  
15 different beers  
Vermont Hard Seltzer  
60+ Vermont Artists

632 LaPorte Rd, Morrisville, VT | 802.888.9400 | RockArtBrewery.com

**von Trapp BREWING** 802-253-5750  
von Trapp Bierhall  
Brewery Tours  
Award-Winning Lager Tastings

1333 Luce Hill Road, Stowe, VT 05672 | vontrappbrewing.com

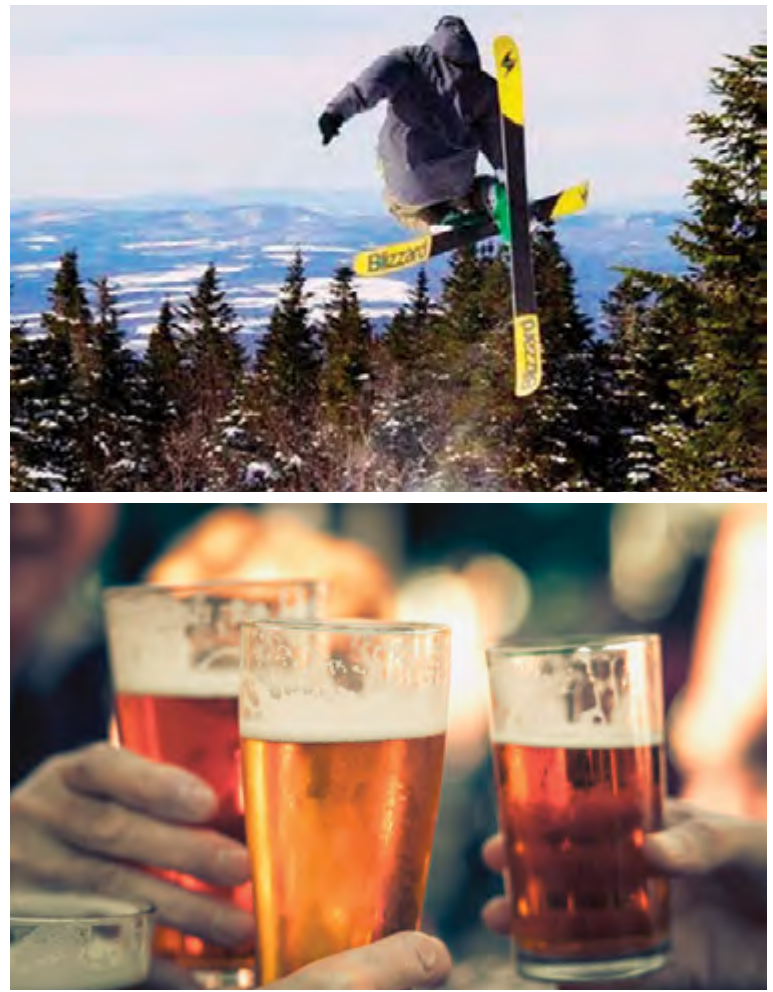
**Michelob ULTRA**  
2.6 CARBS | 95 CALS

**LIVE FIT. LIVE FUN.**

**GOOD TURNS.  
GOOD BEER.**

**GOODWATER  
— BREWERY —**

On Tap @ Bootlegger Lounge & Black Bear Tavern  
In Package @ The Country Store



**Lawson's  
Finest Liquids**

**All Trails  
Lead to  
Sunshine!**

ELEVATE YOUR  
APRÈS WITH A  
LAWSON'S FINEST  
AT BOOTLEGGERS',  
THE BLACK BEAR &  
BEYOND.

LAWSONSFINEST.COM



*Isn't it time to start your family's vacation tradition?*

With two convenient options, **Smugglers' Notch Resort®** makes vacation home ownership easy!



### FULL OWNERSHIP

- Extensive Winter & Summer benefits with discounted ski passes for renting owners
- Studios to 5 bedroom homes available
- Customized second home with interior designs left to your own tastes and needs
- Year-round use to fit your schedule
- Turnkey property and rental management making vacation home ownership hassle-free
- Pet friendly for Full Owners



### FRACTIONAL OWNERSHIP

- Extensive Winter & Summer benefits with discounted ski passes for renting owners
- Fully managed rental opportunities
- Flexibility of use in multiple seasons while sharing the cost of the home with other families (2-3 depending on ownership type)
- 2 & 3 bedroom homes available
- Turnkey property with homes in like-new, premium condition and property management to handle all the needs of home ownership



**CALL TODAY** to schedule an appointment or visit [smuggs.com/re](http://smuggs.com/re) to view homes available for sale!

Betty Brgant, Real Estate Broker  
802.644.1122 (office) • 802.343.0014 (mobile)  
bbrgant@smuggs.com



Smugglers' Notch Management Co., Ltd. • Smugglers' Notch Resort  
4323 Vermont Route 108 South • Jeffersonville, VT 05464

yes, we have a bunch of cool waterslides, too.



They won't remember how great the condo was. Or how you looked in your bathing suit. Or even a single thing they ate. What they will remember is how perfect the sunset was and how beautifully you smiled when they tried their very first s'more ever. Oh yeah, and that cool waterslide.

**WE WANT YOU BACK!** Book your next stay now and **SAVE \$250** on your lodging!



**877.705.5793 • [smuggs.com/ess](http://smuggs.com/ess)**





**STAY  
LOCAL.**

**GO  
FAR.**

**MORTGAGES**

**PURCHASE, REFINANCE AND CONSTRUCTION LOANS.  
LOW DOWN PAYMENT PROGRAMS AVAILABLE.  
LOAN DECISIONS MADE LOCALLY BY EXPERIENCED LENDERS.  
FAST, EFFICIENT APPROVAL PROCESS.**

**UnionBank**

Member FDIC  Equal Housing Lender

**800.753.4343**

**GO.UBLOCAL.COM/MORTGAGE**